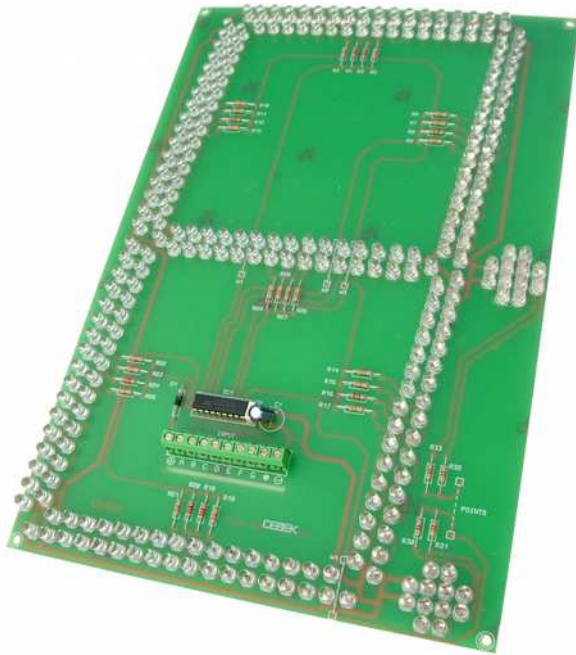


7 SEGMENT DISPLAY 15 cm. for INSIDE CD-23



Technical characteristics

Power	21 V. D.C.
Minimum consumption.	0 mA.
maximum consumption.	130 mA.
Size.	290 x 194 x 15 mm.
Logic Inputs.	7 Segment / TTL-CMOS.
Luminosity.	300 mcd / led.
Angle light scattering.	60°.
Reverse polarity protection (PIP). ...	Yes

Common Cathode Display 7 segment consists of high brightness LEDs. It also includes decimal point and time flag. TTL supports input and CMOS. It is compatible and can be controlled by CD-25 and CD-26 modules.

POWER : 21VDC power supply we recommend Cebek ref. FE-24, which adapts to the needs of the circuit. A positive and negative input clamp.

Install a fuse and a switch for the protection and safety, as reflected CE standards.

OPERATION : The display and control plate that connects to it, have eight terminals (7 segments and the point). You must connect, respecting the specific order, the terminals of the control board with display terminals. Special attention to the assembly, if the circuit will work incorrectly wrong.

Perform the wiring between the display and the control plate, considering the position that it should occupy (ones, tens, hundreds, etc.).

To control the display with other non-CD-25 and CD-26, first make sure to attach the negative of its control circuit devices and display modules, then perform the wiring of the 7-segment and point.

The excitement of each segment will occur when you inject a positive signal from 5 to 30 VDC by contrast, the segment will remain off when the injected signal is the negative (0 V). You should always keep entries display connected to a signal 0V or positive voltage corresponding. If not, the display will behave incorrectly.

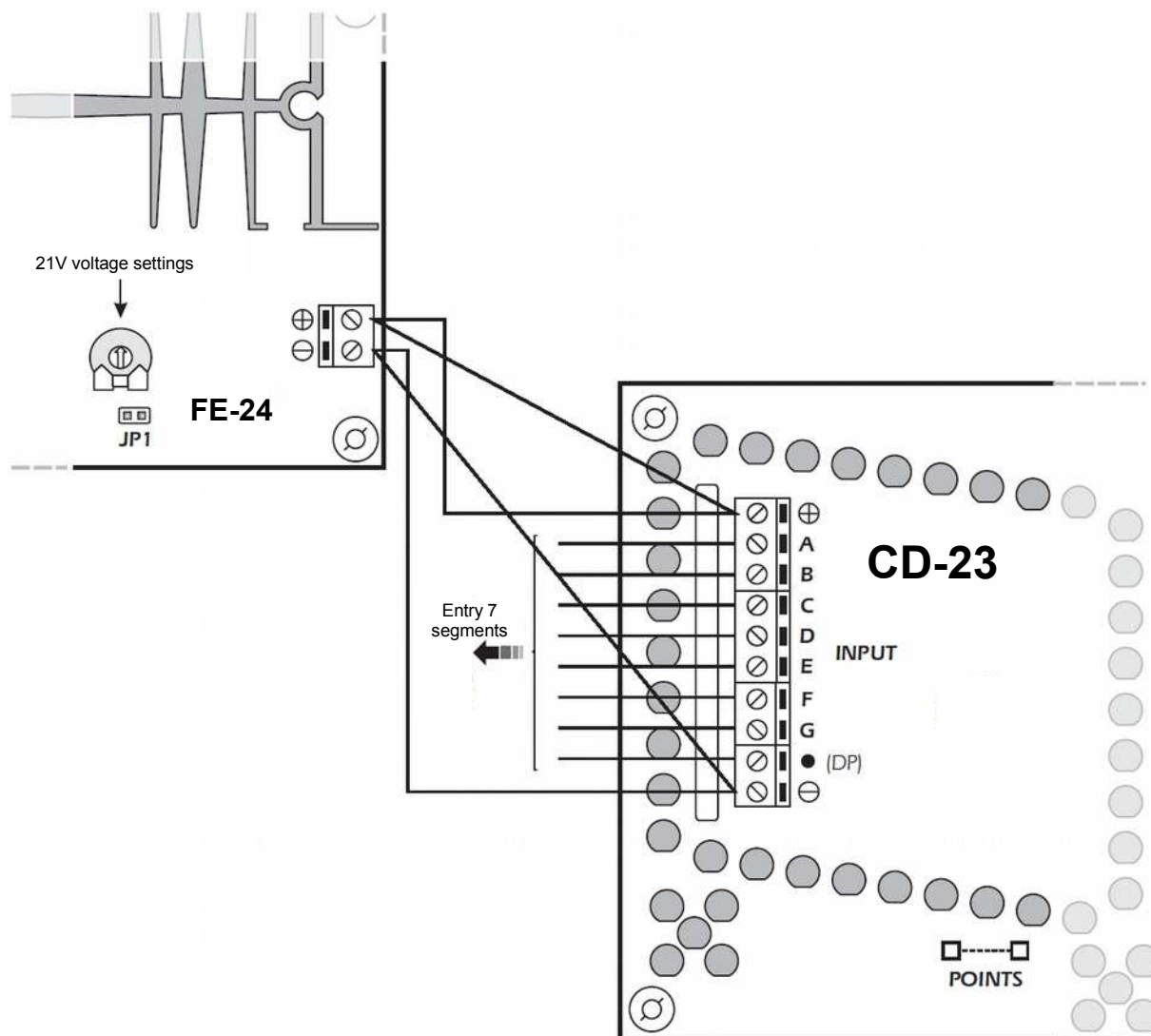
DECIMAL / FLASHING TIME PERIOD. EL display lets you choose between a lower activation point (decimal), or both points, becoming a flag schedule. Factory is provided only the decimal point, to turn the other point should be joined by a bridge circuit the two holes marked "POINTS".

Thus, when the input excite point, both points will be illuminated simultaneously.

CONSIDERATIONS. The length of the body wiring the display and control circuit should not exceed 50 cm, otherwise it could become a collector of parasites and various interference which will adversely affect the operation of the module. If longer than needed, up to 2 m. You can use shielded cable, connect the braid to the negative of the circuit. It is not advisable to exceed 2 m.

The control board must always be powered by a power supply perfectly stabilized because its stability will also affect the control signals on the display.

GENERAL WIRING MAP.



Cebek [®] is a registered trademark of the Fadisel group