

## 2. Getting started

---

### 1. Connecting the module

Start off by mounting the WLAN Relay Card module onto your DIN Rail. Tip: hook the top of the module over the rail, then pull the lid on the bottom of the module when clicking it into place.

### 2. Accessing the card

To access the card, you have two options:

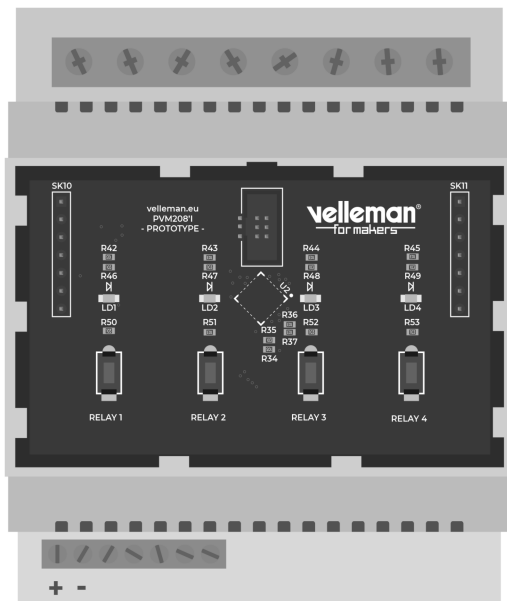
A. Plug an Ethernet cable into the card and get immediate access.

B. Do the Wi-Fi setup routine and then access the card.

Both options will be explained below.

#### A. Ethernet option

Step 1: connect the **power supply (Min 12V Max 24V!)** with the module as shown in the connection scheme below.



Step 2: plug the Ethernet cable into the module (at the bottom, right). Make sure that you can connect to the same network with another device. It can be a laptop or PC, Android device or iOS device.

Now scroll to the next chapter: 3. PC or smartphone.

#### B. Wi-Fi option

Step 1: start by configuring the Wi-Fi credentials. Hold button 1 and 4 while powering up until the LEDs flash twice. Step 2: go to your device and connect it to the hotspot.

**SSID** : VM208\_AP

**Password** : VellemanForMakers

Go to the URL 192.168.4.1

Step 3: fill out the form and press save! **Remember the credentials!**

Sign in to VM208\_AP

192.168.4.1

WLAN Credentials:

Enter SSID

Enter WLAN password

Name of your device:

VM208

Credentials:

Enter username

Enter User password

SAVE

Copyright © 2019 | Velleman

### 3. PC or smartphone

You can now access the module either by using a PC or smartphone. Go to your desired option below.

#### A. PC

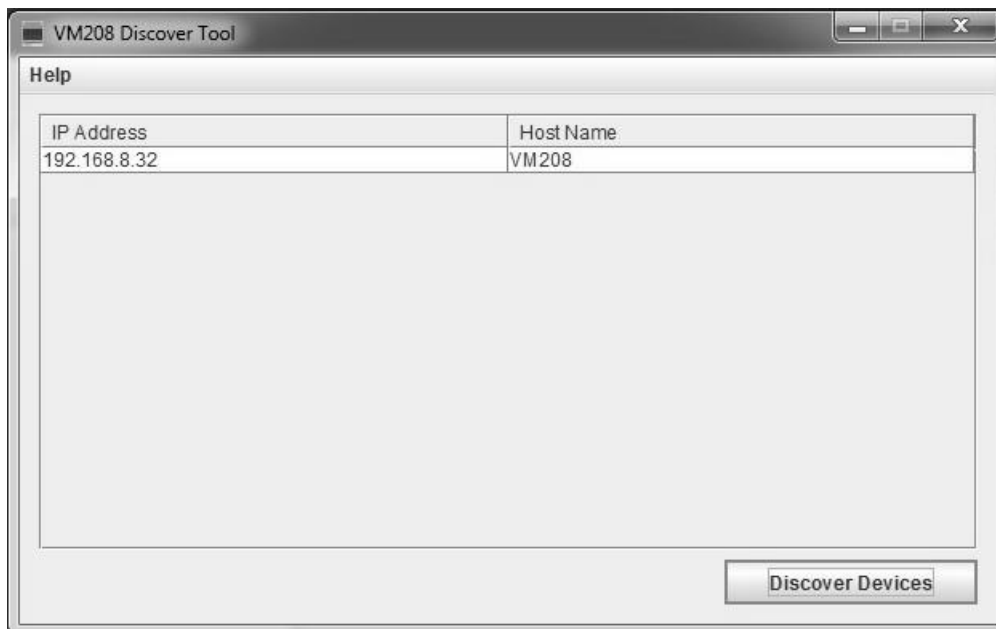
Step 1: download and open the discovery tool from our website:

You should see the card listed. If not, click the discover button.

If you have trouble finding the card, check the following steps:

- Is the card connected to the same network as your pc?
- Is a firewall/antivirus blocking anything? (it sends a broadcast message on port 30303)
- Is the Relay Card powered?

Step 2: your default browser should pop-up and you should see an IP address and host name. Access the Relay Card by clicking the entry.



Step 3: when your pc asks for credentials, enter the following.

**User:** ADMIN

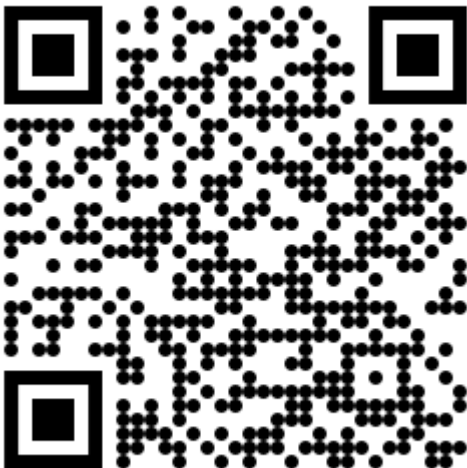
**Password:** VM208

You now have access to the Relay card. The settings will be explained in the next chapter!

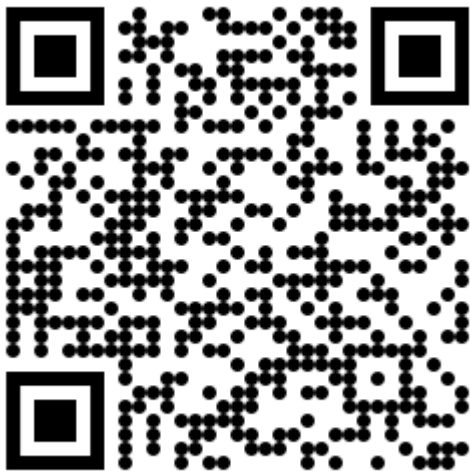
## **B. Android or iOS smartphone**

Install the VM208 App from the google play store or the Apple's app store.

Android:



iOS:



Open the app and add a device by tapping the + icon.



On the next screen, press the scan button.

11:24

0.00 K/s

46%

←

Name of the card

Name:

Username:

Password:

Local Network Settings

Local IP:

Extern Network Settings

External IP:

External Port:

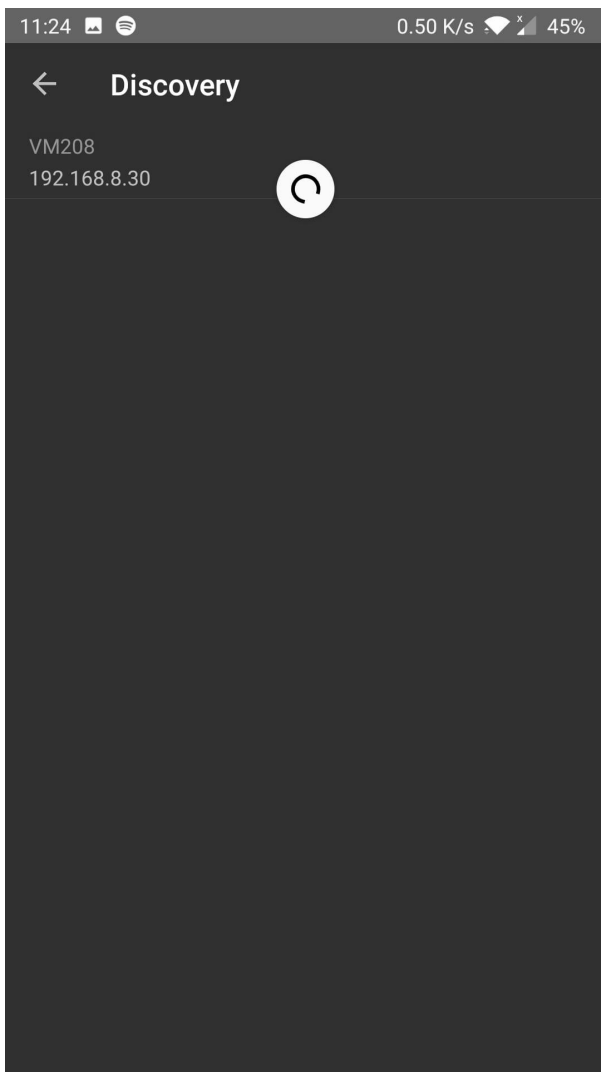
CONNECT TO LOCAL IP

Connect to local network;

SCAN

SAVE

The card should be detected and showing in the list.



If the card is not listed, please check the following:

1. Is the card connected to the same network as your smartphone?
2. Is a firewall/antivirus blocking anything? (it sends a broadcast message on port 30303)
3. Is the Relay Card powered?

The following screen should be shown. Fill out the credentials as shown below and don't forget to **press save** !

11:25

0.00 K/s

45%

←

VM208

Name of the card

Name:

VM208

Username:

ADMIN

Password:

VM208

Local Network Settings

Local IP:

192.168.8.30

Extern Network Settings

External IP:

External Port:

CONNECT TO LOCAL IP

Connect to local network;

☒

SCAN

SAVE

The relay card is now saved. Tap on the device name in the main screen so you can access the card.



[Head over to the next chapter!](#)

---

Article Number: 1189

Posted: Thu, Jan 30, 2020 2:13 PM

Last Updated: Fri, Jan 31, 2020 11:46 AM

Online URL: <https://manuals.whadda.com/article.php?id=1189>