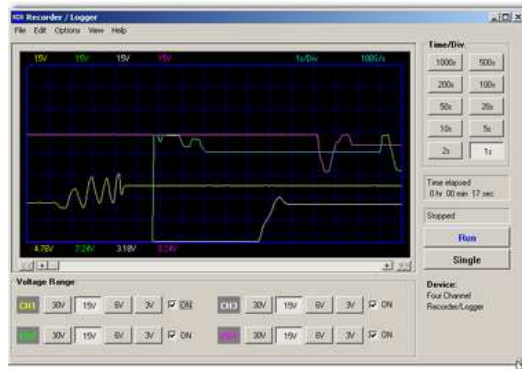
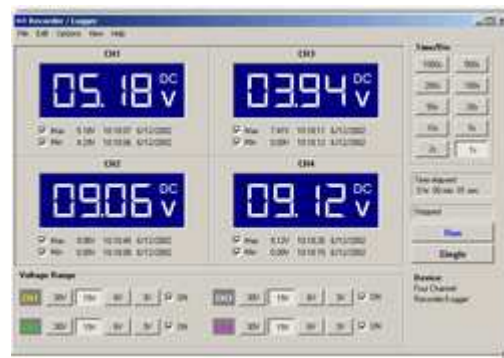




## 4 CHANNEL USB RECORDER / LOGGER



**PCS10 / K8047**



## USB driver installation instructions

# Table of Contents

<b>Part I English</b>	<b>3</b>
<b>1 USB driver installation .....</b>	<b>3</b>
fig1 .....	3
fig2 .....	4
fig3 .....	4
fig4 .....	5
fig5 .....	5
fig6 .....	5

---



# 1 English

## 1.1 USB driver installation

Start by inserting the included PC-LAB2000 CD in your PC and executing the installation procedure that will install the PC-LAB2000 on your hard disk. You may already be using PC-LAB2000 with another one of our other products (PCS100,PCS500,PCG10,..). Make sure you are using Rev 1.30 or higher.



### 1.1.1 fig1



Use the included USB cable to link the K8047/PCS10 to your computer's USB interface connector. Click on the screen button "NEXT" to install the H.I.D. USB driver if necessary. Check if the green LED (POWER) lights

---

### 1.1.2 fig2



Click on "NEXT" again

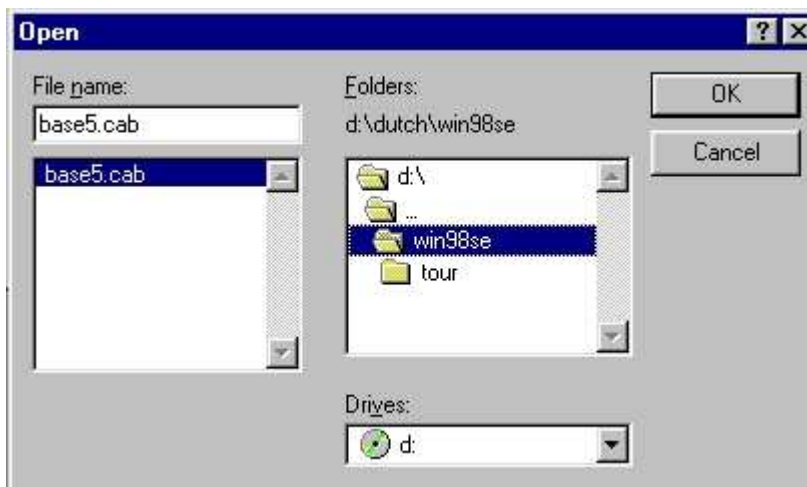
### 1.1.3 fig3



Indicate the location of the Windows 98 SE CD or the Windows 98 SE driver files (\*.CAB)

**1.1.4 fig4**

Put your original Windows 98 SE CD in your CDROM drive if necessary

**1.1.5 fig5**

Indicate the correct location of the driver files if this is not taken care of automatically

**1.1.6 fig6**

The installation of the driver is successful if the next screen is displayed.  
Click on "Finish"

---

Velleman Instruments is a division of  
Velleman Components NV.  
Legen Heirweg 33  
9890 Gavere  
Belgium

Internet site : <http://www.velleman.be>  
E-mail : [support@velleman.be](mailto:support@velleman.be)