



# 2MHz USB FUNCTION GENERATOR PCGU1000



2.0 & 1.1 compatible

In the box:

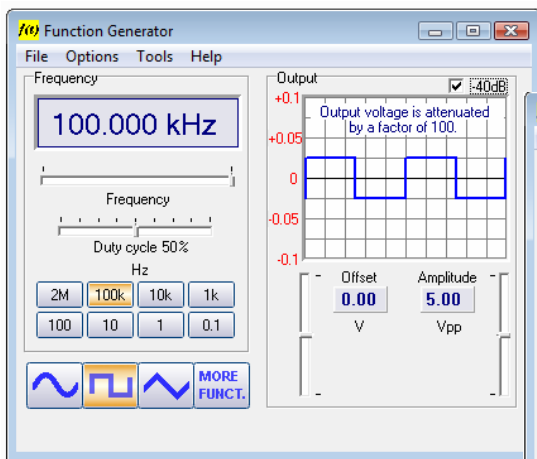


Small and stylish, Space saving design

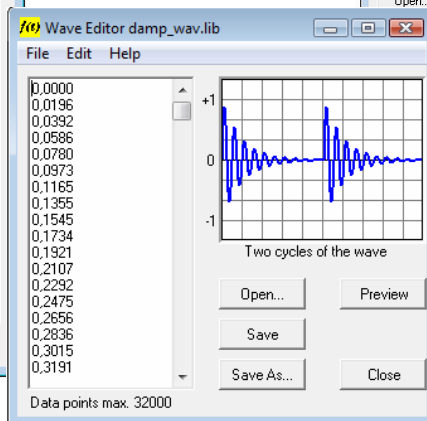
Turns your computer into a powerful function generator !

### Features:

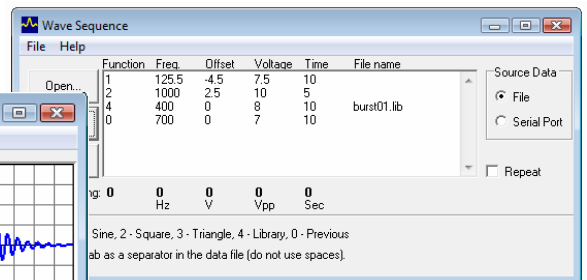
- ✓ Frequency range from 0.01Hz to 2 MHz.
- ✓ Crystal-based stability.
- ✓ **USB port is galvanically isolated from the PC.**
- ✓ Low sine wave distortion.
- ✓ Two parallel output connectors for waveforms
- ✓ TTL level synchronization output.
- ✓ Stores up to 8192 of waveform points.
- ✓ Standard waveforms: Sine, Square, and Triangle.
- ✓ Predefined library waveforms included: Noise, Sweep,...
- ✓ Create waveforms with the integrated signal wave editor
- ✓ Sweep frequency range 0.0001Hz to 25MHz
- ✓ Sweep time 1ms to 10 hours
- ✓ Noise mode bandwidth 25MHz
- ✓ Extended bode plot option together with PC scope.
- ✓ Automated wave sequence generation, using file or computer RS232 input.



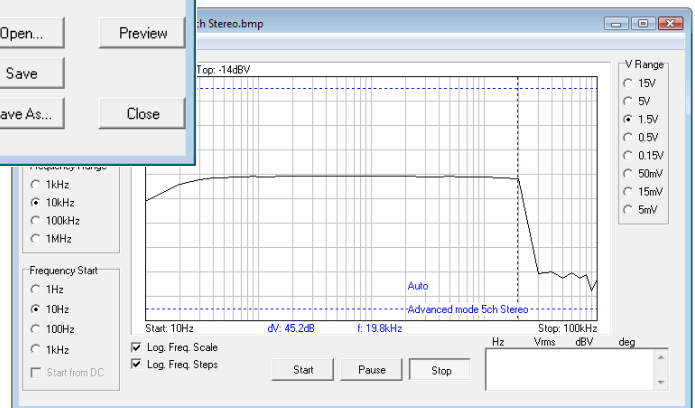
Main screen



Wave editor



Automated wave sequence generation



Bode plot functions, using any of our PC scopes, PCSU1000, PCS500, PCS100.

### Specifications:

- Amplitude range: 0.1Vpp to 10Vpp @ 1kHz //600 Ohm / 0V offset
- Frequency setting resolution: 0.01%.
- With internal 40 dB attenuator (output divided by 100)
- Direct Digital wave synthesis (DDS), 8192 samples wave table.
- Amplitude resolution: 0.4% of full scale.
- Offset: from 0 to -5V or +5V max. (resolution 0.4% of full scale).
- Vertical resolution: 8 bits (0.4% of full scale).
- Sample rate: 50MHz.
- Typical sine wave distortion (THD): < 0.08%.
- Output impedance: 2 x 50 Ohm.
- Power supply: World universal 9V DC adapter, 600mA.
- Dimensions (wxdxh): 55x190x200mm (2.2"x7.5"x7.9").

### Minimum system requirements

- IBM compatible PC
- Windows 98SE, ME, 2000, XP, Vista
- SVGA display card (min. 800x600)
- mouse
- free USB port
- CD Rom player