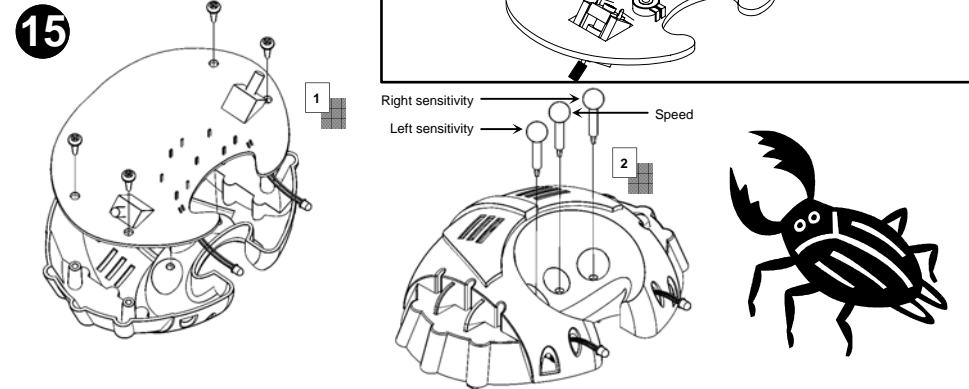
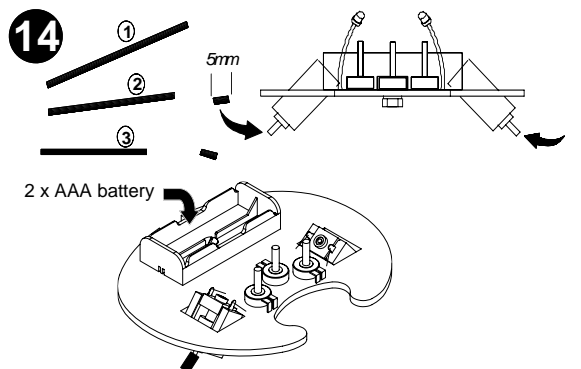
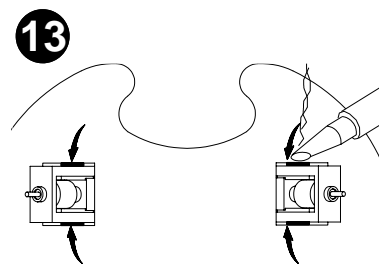
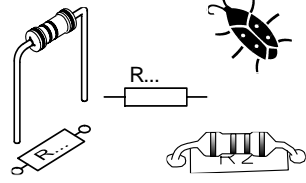


START

1	Resistor - Weerstand	◇ R1,R2 : 1K	(Brown, Black, Red) -(Bruin, Zwart, Rood) -(Brun, Noir, Rouge) -(Braun, Schwarz, Rot) -(Brun, Svart, Röd) -(Ruskea, Musta, Punainen) -(Marrón, Negro, Rojo) -(Castanho, Preto, Encarnado) -(Marrone, Nero, Rosso)
		◇ R3,R4 : 10K	(Brown, Black, Orange) -(Bruin, Zwart, Oranje) -(Brun, noir, Orange) -(Braun, Schwarz, Orange) -(Brun, Svart, Orange) -(Ruskea, Musta, Oranssi) -(Marrón, Negro, Naranjado) -(Castanho, Preto, Laranja) -(Marrone, Nero, Aranciatto)
		◇ R5,R6,R7,R8 : 100	(Brown, Black, Brown) -(Bruin, zwart, Brown) -(Brun, noir, Brun) -(Braun, Schwarz, Braun) -(Brun, Svart, Brun) -(Ruskea, Musta, Ruskea) -(Marrón, Negro, Marrón) -(Castanho, Preto, Castanho) -(Marrone, Nero, Marrone)
		◇ R9,R10 : 220	(Red, Red, Brown) -(Rood, Rood, Bruin) -(Rouge, Rouge, Brun) -(Rot, Rot, Braun) -(Röd, Röd, Brun) -(Punainen, Punainen, Ruskea) -(Rojo, Rojo, Marrón) -(Encarnado, Encarnado, Castanho) -(Rosso, Rosso, Marrone)



2	LDR	3	Switch	4	Hor. trimmer	5	TRANSISTOR
◇ LDR1	◇ LDR2	◇ SW1	◇ SW2	◇ RV1 : 22K (25)	◇ RV2 : 10K	◇ RV3 : 10K	◇ T1 : BC547C
							◇ T2 : BC547C
							◇ T3 : BC547C
							◇ T4 : BC547C
							◇ T5 : BC547C
							◇ T6 : BC547C
							◇ T7 : BC557C
							◇ T8 : BC557C

6	ELECTROLYTIC
	Watch the polarity! Att. à la polarité!
◇ C1 : 22µF	◇ C2 : 22µF

7	Battery holder
	Red-Rood-Rouge-Rot Röd-Punainen-Rojo- Encarnado-Rosso

8	LED
	Watch the polarity! Att. à la polarité!
◇ LD1	◇ LD2

9	DIODE

