

October 13, 2017

Installation of Software / Driver for PCSU1000_Windows 10 32 – 64 Bit.Installation Software “PcLab2000SE”

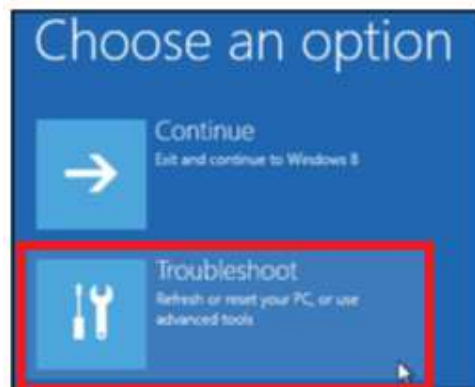
- 1) Download the software from this our site:
https://www.velleman.eu/downloads/files/downloads/pclab2000se_v4_05_setup.zip
- 2) Unzip (extract) the downloaded setup file.
- 3) Install the software in normal way and follow the instructions of installation wizard.

Installation driver for PCSU1000:

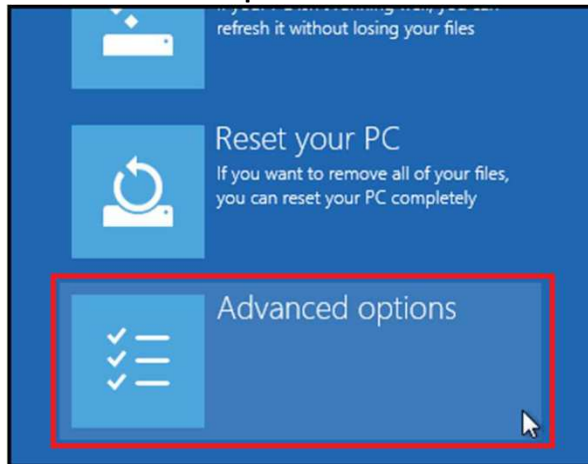
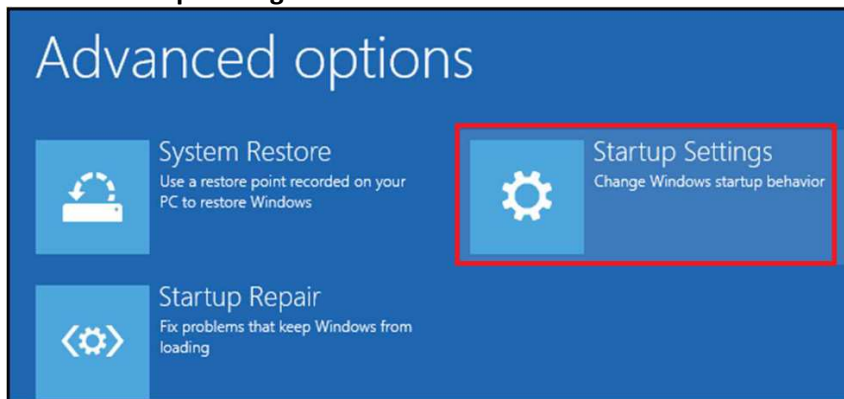
- 1) Download the driver from our site and save it to:
“Downloads” folder: C:\Users\“your user name”\Downloads |
link: https://www.velleman.eu/downloads/files/downloads/pcsu1000_driver_2_04_16.zip
- 2) Unzip the file to “Downloads” folder: C:\Users\“your user name”\Downloads
- 3) Connect the PCSU1000 onto a free USB port of computer.
- 4) Reboot the computer in “Driver enforcement mode” for installing unsigned drivers.
 - a. **Hold shift** key pressed while you click on “Restart”.



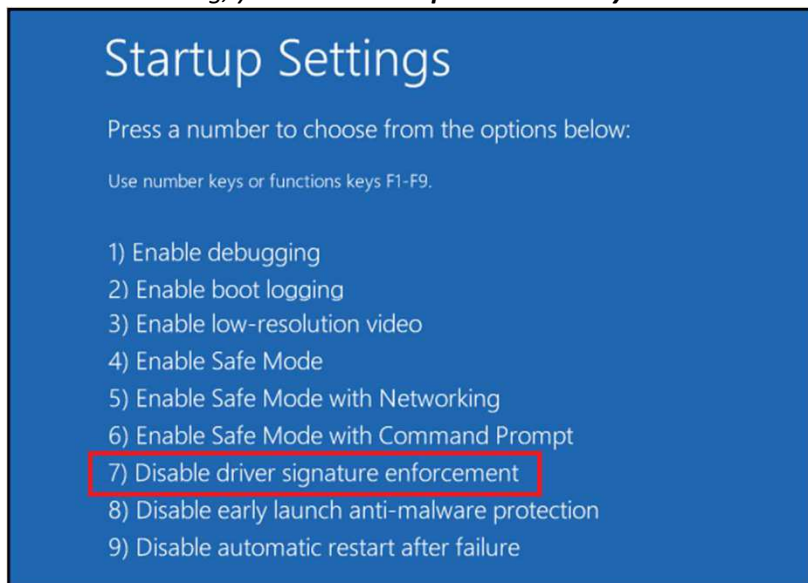
- b. Once your computer has rebooted, you'll be able to choose the **Troubleshoot** option.



October 13, 2017

c. Choose **Advanced options**.d. Choose **Startup Settings**.

- e. *Since we are modifying boot time configuration settings, you will need to restart your Computer one last time. Finally, you will be given a list of startup settings that you can change. The one we are looking for is “**Disable driver signature enforcement**”. To choose the setting, you will need to **press the F7 key**.*



Your PC will then reboot and you will be able to install unsigned drivers without any error message.

October 13, 2017

5) Open “Control Panel” and navigate to “Device Manager”.

**) Right click on Start button and choose Control Panel → Device manager.*

) or Press Windows key + R => type in: `devmgmt.mcs` and click **OK, to open device manager.*

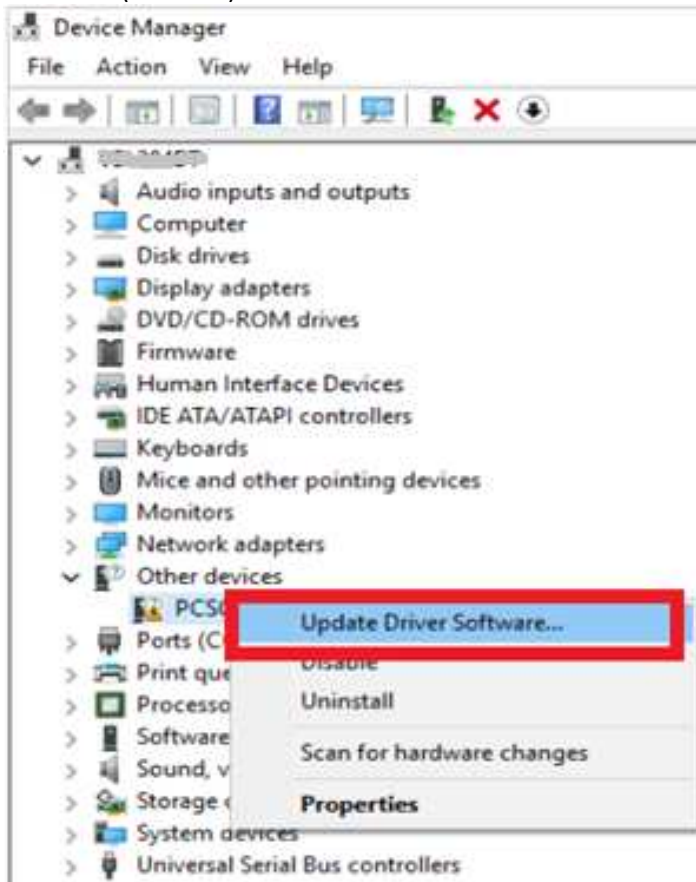
**) or click windows key (start button) => navigate to Windows System => click on Control Panel and click Device Manager.*

In this driver list, you'll find a Yellow exclamation mark at (Other devices): **PCSU1000**.



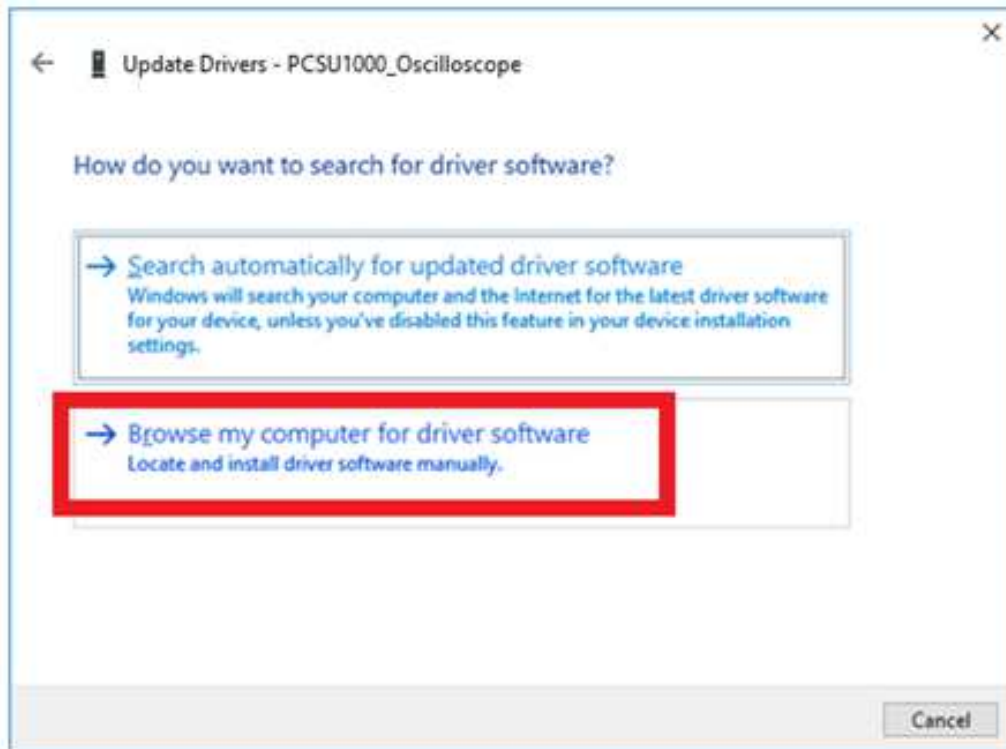
October 13, 2017

- 6) Give a **right click** onto **PCSU1000**. A follow window appears. And choose **Update Driver Software** (left click).

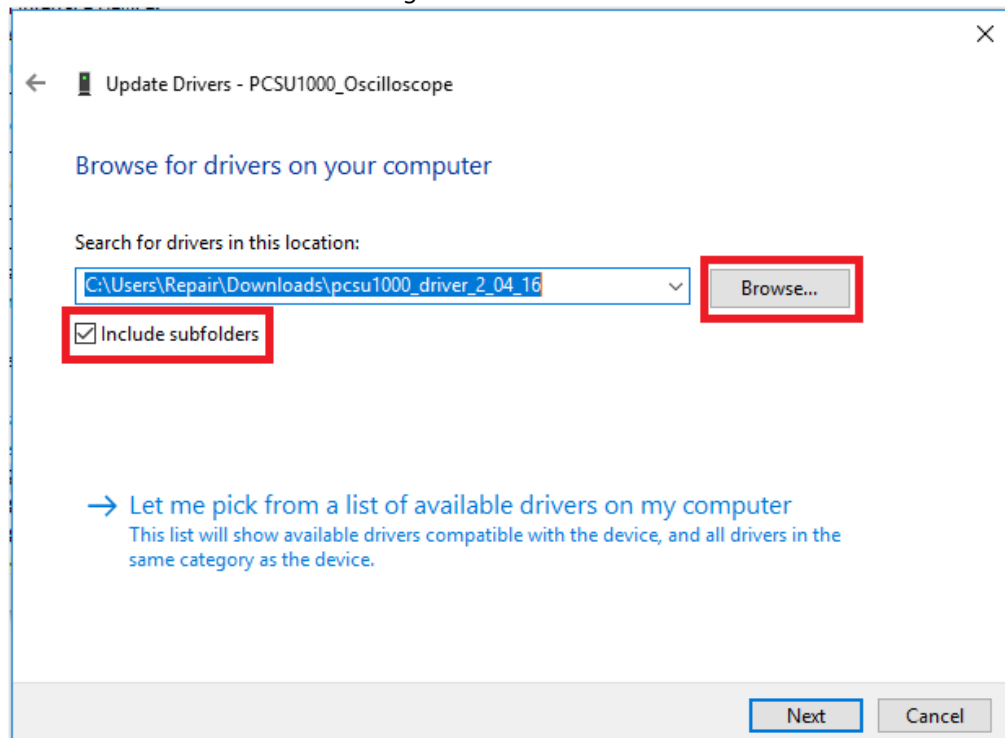


October 13, 2017

- 7) Browse on computer where the driver is located. Choose **“Browse my computer for driver software.”**

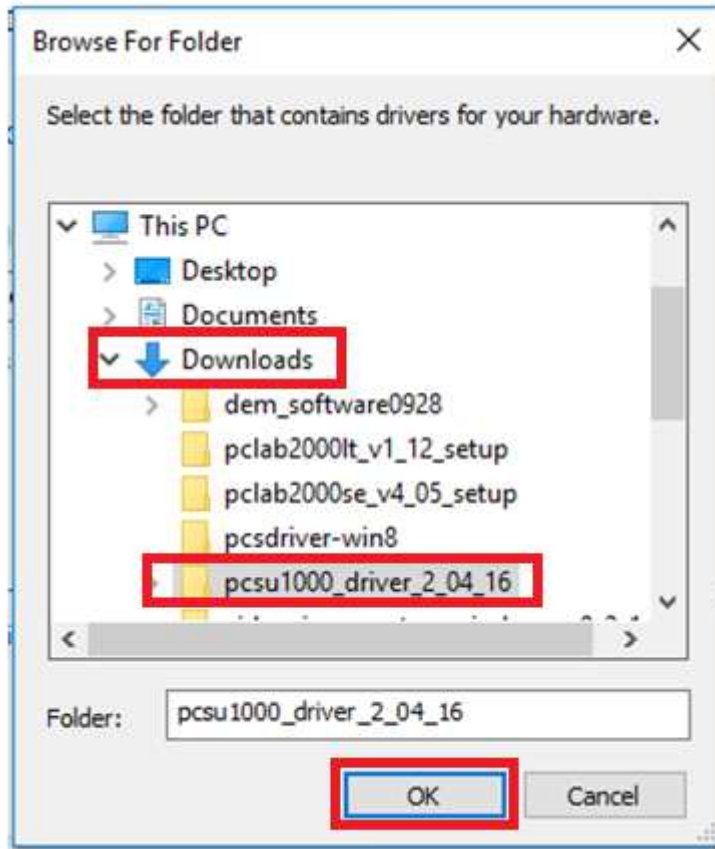


- a. Click on **Browse** button. And navigate to driver location.

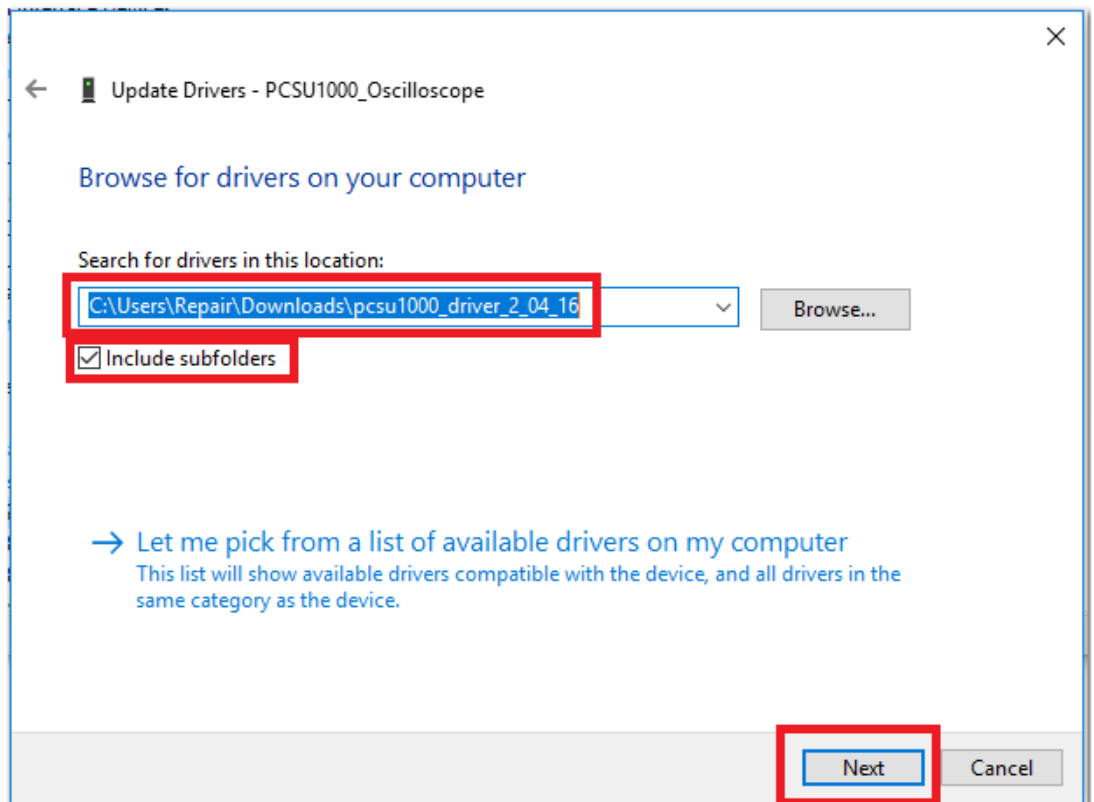


October 13, 2017

- b. Browse to driver location: `C:\Users\“your user name”\Downloads`, and click **OK**.



- c. Click on **Next** button.

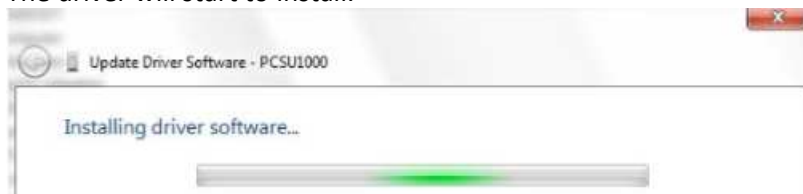


October 13, 2017

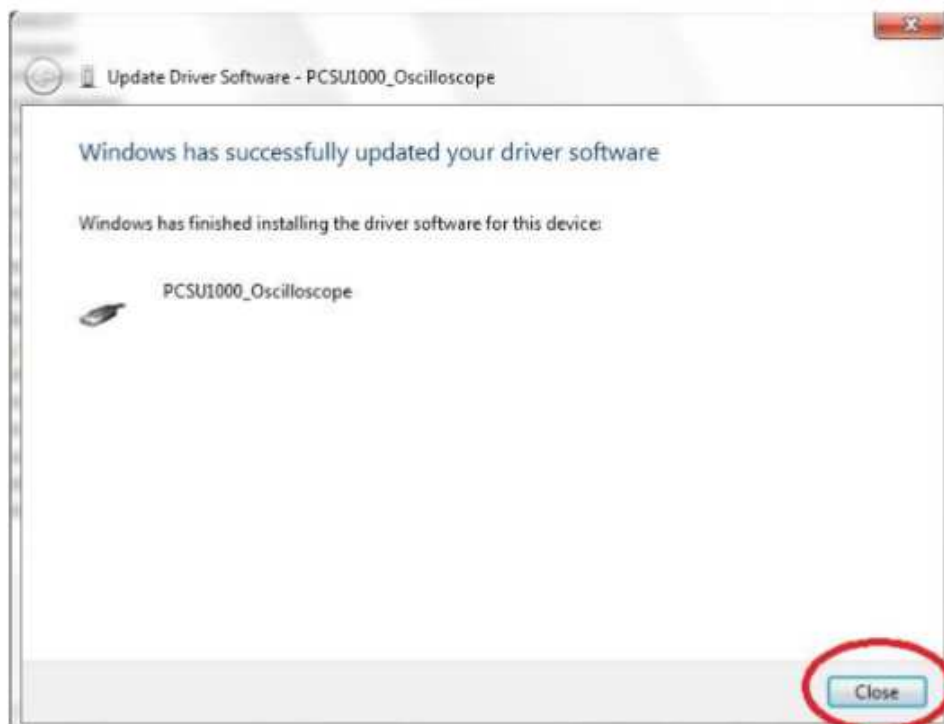
- 8) A “Windows Security” window appears and choose: “Install this driver software anyway.”



- a. The driver will start to install.

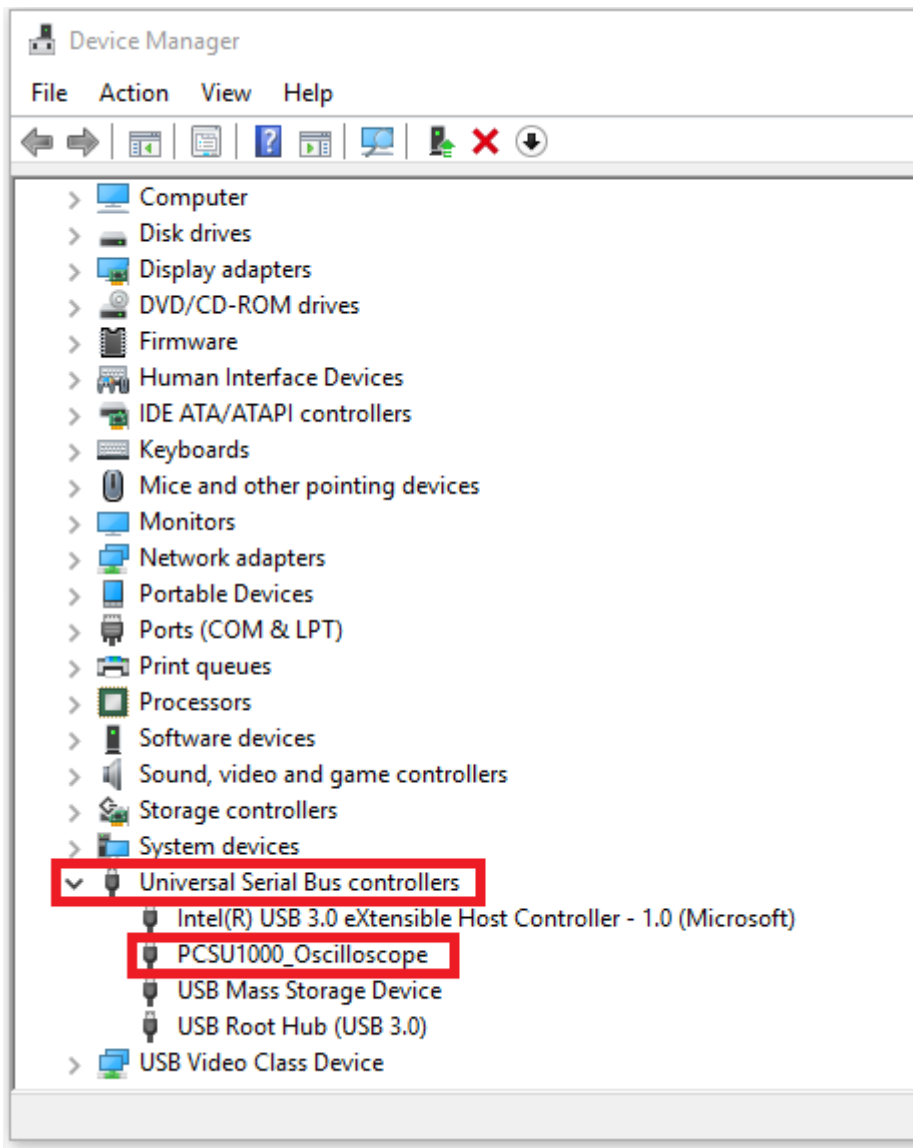


- 9) After installing, a message appears: “Windows has successfully updated your driver software”. And click on **close** button.



October 13, 2017

- 10) In the device manager list, you'll see that driver for PCSU1000 are successfully installed and yellow exclamation mark is disappeared. Driver installation is complete.



- 11) Close Device manager.
12) Reboot the computer.
13) After Reboot, start the software: PcLab2000SE.
14) Then calibrate the scope: **File => Calibrate & exit.**
15) Restart the software. Now the PCSU1000 is ready to use.

Best regards,
Velleman Repair
Repair Department



Velleman nv | Legen Heirweg 33 | 9890 Gavere | Belgium (Europe)