

## Quasar Order Code 3076R - PIR Motion Detector Module

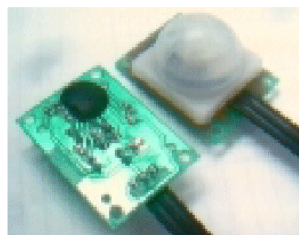
3076R is a complete passive infra-red movement detector module on a PCB 25mm x 35mm. The main components are a PCB- mounted fresnel lens, an RE200B PIR (passive infra-red) sensor from Nicera and a custom-made surface mount movement detector IC. Pulse width output and unit sensitivity have been fixed.

Only three connections need to be made: power and capturing the output signal. The open collector, active high output pulse is about 0.5 second long. It is up to the user to capture this signal and connect it an alarm or other device. See the back of the PCB for connections: OUT, V+, GND. Supply voltage may be between 4V to 12VDC. Note the unit should be allowed to warm- up for at least a minute after power is applied.

See our website for more specification sheets and data sheets on the RE200B and Fresnel sensors at <http://www.quasarelectronics.com/ds.htm>. See also the 12V DC version of this module at <http://www.quasarelectronics.com/3133.htm>

### Features:

- ☐ IC soft package by dice bonding technique
- ☐ Small size: 25 x 35mm
- ☐ Ball lens is included as standard configuration
- ☐ 3 leads flat cable for easy connection
- ☐ 4 mounting holes on board
- ☐ High Sensitivity
- ☐ High immunity to RFI
- ☐ Power up delay to prevent from false triggering
- ☐ Output High for direct connect to control panel



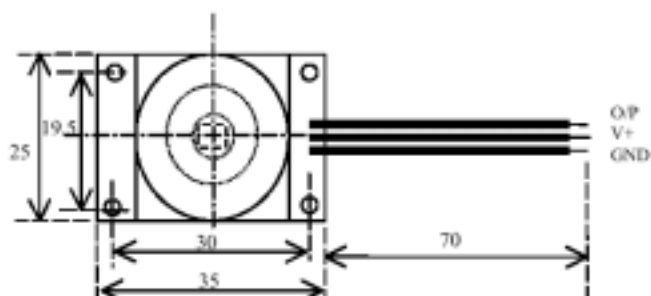
### Specification

	Min	Typ	Max	Unit
Operation Voltage	4.7	5	12	V
Standby Current ( no load)		300		$\mu$ A
Output Pulse Width	0.5			Sec
Output High Voltage		5		V
Detection Range		5		M
Operation Temperature	-20	25	50	$^{\circ}$ C
Humidity Range			95	%

### Standard Configuration

PIR controller	KC778B in dice form
PIR Sensor	RE200B by NICERA
Lens	Ball lens of 60 $^{\circ}$ detection angle
Connector	3 leads flat cable, Power, GND, O/P

### Mechanical Dimension

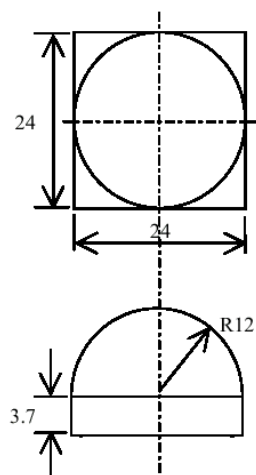


### Application Note:

1. The PIR sensor is sensitive to the temperature change and therefore to prevent from operating the module in rapid environmental temperature changes, strong shock or vibration. Don't expose to the direct sun light or headlights of automobile. Don't expose to direct wind from heater or air conditioner.
2. This module is designed for indoor use. If using in outdoor, make sure to apply suitable supplemental optical filter and drop-proof, anti-dew construction
3. Detection range might be varied in different environmental temperature condition.

### Lens Dimension

(unit in mm)



### Vertical View Pattern

