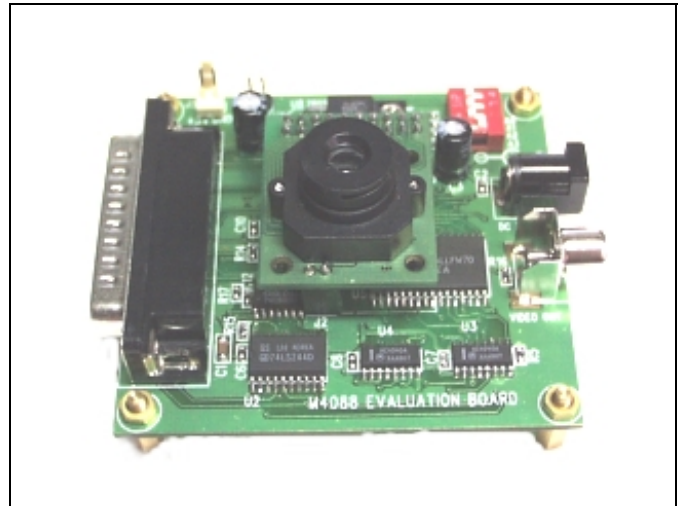


# EV48 Evaluation Board For M4088

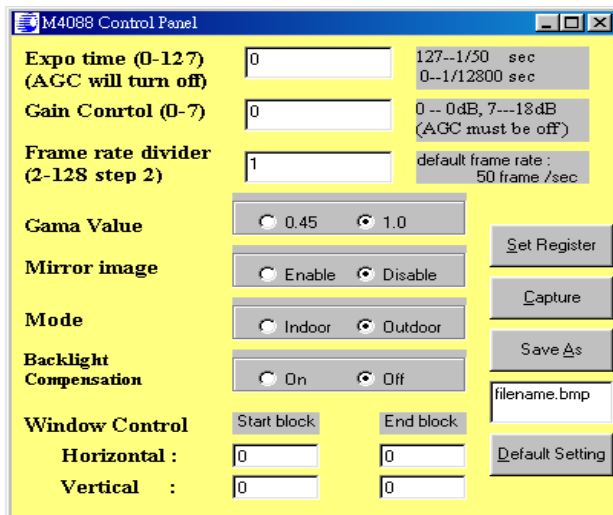
EV48 is the evaluation board for M4088, BW digital camera module. It provides the parallel interface for PC control. It also provides analog monochrome signal output for monitoring purpose. Driver program is provided for evaluation the features of camera module.

## Features

- 8bit data format (256 grey scale)
- Image size :384 x 288 pixel
- Image display on PC monitor in bmp format
- Raw data is also provided
- Manual switch for register selection
- Window control
- Progressive scanning
- Mirror function
- Gain, exposure, Gamma control
- Still picture capture, 1 frame
- 6V battery or 9VDC power supply



## Software Control Panel



## Specification

Camera Module	M4088
Operation Voltage	7V - 12V DC (9V recommended) or 5V power supply
Current Consumption	200mA max
Video Output	Composite video, monochrome 50Hz
PC Interface	Pentium, Windows95/98, ECP parallel port

## Illustration Diagram

